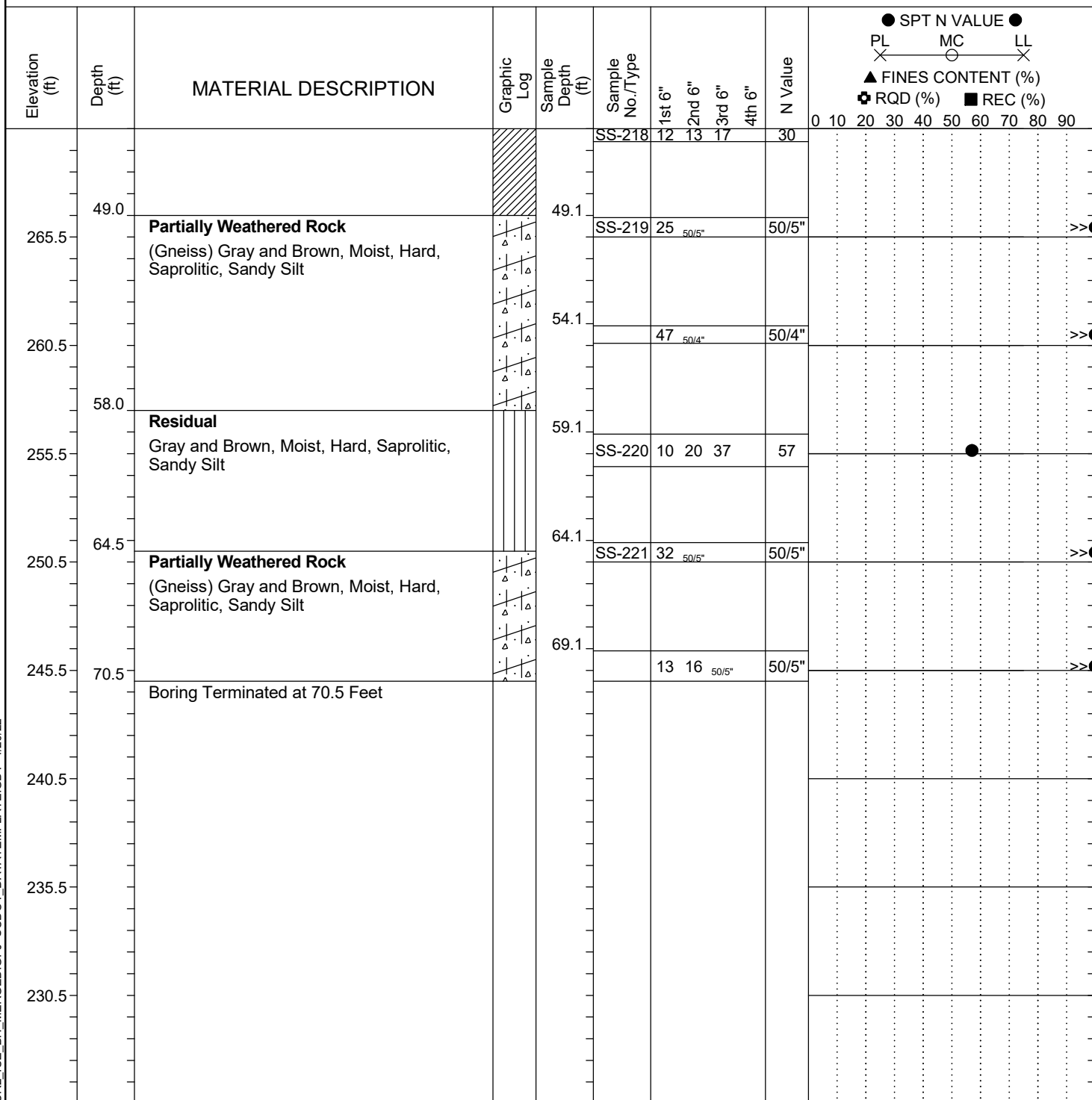


Project ID:	P039719	County:	Richland	Boring No.:	G-130
Site Description:	Carolina Crossroads Phase 2 - Bridge 42B			Route:	Broad River Rd.
Eng./Geo.:	M. Stanbury	Boring Location:	204+99	Offset:	104 LT
Elev.:	315.5 ft	Latitude:	34.03990117	Longitude:	-81.09327556
Total Depth:	70.5 ft	Soil Depth:	70.5 ft	Date Started:	2/24/2022
Core Depth:	N/A ft	Date Completed:	2/24/2022	Alignment:	I20CL
Bore Hole Diameter (in):	2.25	Sampler Configuration		Liner Required:	Y (N)
Drill Machine:	D-50 #439	Drill Method:	RW	Liner Used:	Y (N)
Core Size:	N/A	Hammer Type:	Automatic	Energy Ratio:	90.8%
Driller:	R. Cassell	Groundwater:	TOB	24HR	29.1 ft


LEGEND

SAMPLER TYPE		DRILLING METHOD	
SS - Split Spoon	NQ - Rock Core, 1-7/8"	HSA - Hollow Stem Auger	RW - Rotary Wash
UD - Undisturbed Sample	CU - Cuttings	CFA - Continuous Flight Augers	RC - Rock Core
AWG - Rock Core, 1-1/8"	CT - Continuous Tube	DC - Driving Casing	